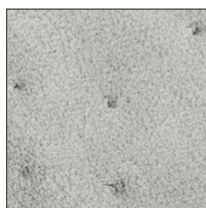




# PRODUCT SHEET

Date of issue: 31/01/23

**DUO FACE DUST** - ultra-microfiber double-faced mop, dry dusting



REF.	NOTES	WEIGHT (gr)	NET WEIGHT (kg)	SIZE (cm) ↓ ↓ ↓	PCK	VOLUME (m³)	GROSS WEIGHT (kg)
00PD04S0S00EE		130	0,13	46x19,5	10	0,013	1,5

## APPLICATIONS

This mop can be used on both-sides and it is ideal for the dust mopping of smooth surfaces. Design to be used with Duo Face® mop holder.

## ECO BOX



### ECO-FRIENDLY PRODUCT

100% solar-powered textile production  
Product sold in packaging compliant with Legislative Decree 116 of 03-09-2020 concerning the obligation of environmental labeling for correct disposal at the end of use. 99% of the cardboard packaging used by the company is made on average with 80% recycled paper

## FEATURES

- Perfectly reversible: with one mop you can double the cleaning operations
- 100% of cleaning surface
- High quality, completely made in Italy material
- More resistant thanks to a special ultrasonic welding of the two mop sides with total absence of seams.
- Mop fixing system with central raised part for an easy and non-slip mop fixing
- Higher hygiene thanks to the lack of pockets and fabric thickness where dirt and bacteria deposit more easily
- Great smoothness
- Very good dust and dirt residue collection
- It allows to eliminate floor dusting with disposable cloths, with savings of cleaning material and reduction of waste

## MATERIAL

### CLEANING SIDE

Microfibre: 100%  
Microfibre composition: 90% polyester - 10% polyamide  
Microfibre Denier: 0,13  
Fabric weight: 600 gr/mq

## LIFE CYCLE

Washable max 500 cycles if washing instructions and warnings are respected

Disclaimer: Filmop International Srl reserves the right to update the contents of this document at any time and without notice.

# PRODUCT SHEET

Date of issue: 31/01/23


## CARE AND MAINTENANCE


### WARNINGS


Follow carefully the washing instructions and warnings on the detergent packaging (temperature and dosing) before washing  
We recommend the use of normal detergent for textiles, no fabric softener  
Always a pre-wash cycle in cold water without detergent to remove any residue of chemical solution  
We suggest to use the specific net bags for the mop washing

### WASHING INSTRUCTIONS

 SUGGESTED washing temperature: 60° C

 Mechanical drying at low temperature 50°C

 No ironing

 Do not dry clean

Do not use softener  
Use alkaline detergents with Ph < 11

## RELATED PRODUCTS



**DUO FACE** - reversible plastic mop holder with Lock System

## GENERAL PRODUCT SAFETY

The products sold by us do not need a product certification, as they are in compliance with the definition in Legislative Decree 206 of 06.09.2005

## DECLARATION OF CONFORMITY

All the products sold by us are in compliance with the laws in force regarding safety and are covered by an insurance policy "Civil responsibility for products"